

Menu is used to view online documentation, identification matrix, elimination hierarchy, lab reports and to perform various other tasks.

Reagent list is used to select reagents for addition to tubes and plates.

Media list is used to select an inoculation medium.

Status lights show the inoculation and contamination status of the inoculum and inoculating medium.

Session List is used to open a laboratory session.

New Day Button advances the incubation timer 24 hours.

Instrument toolbar is used to select inoculating loop, wire, reagent dropper, and close-up tools.

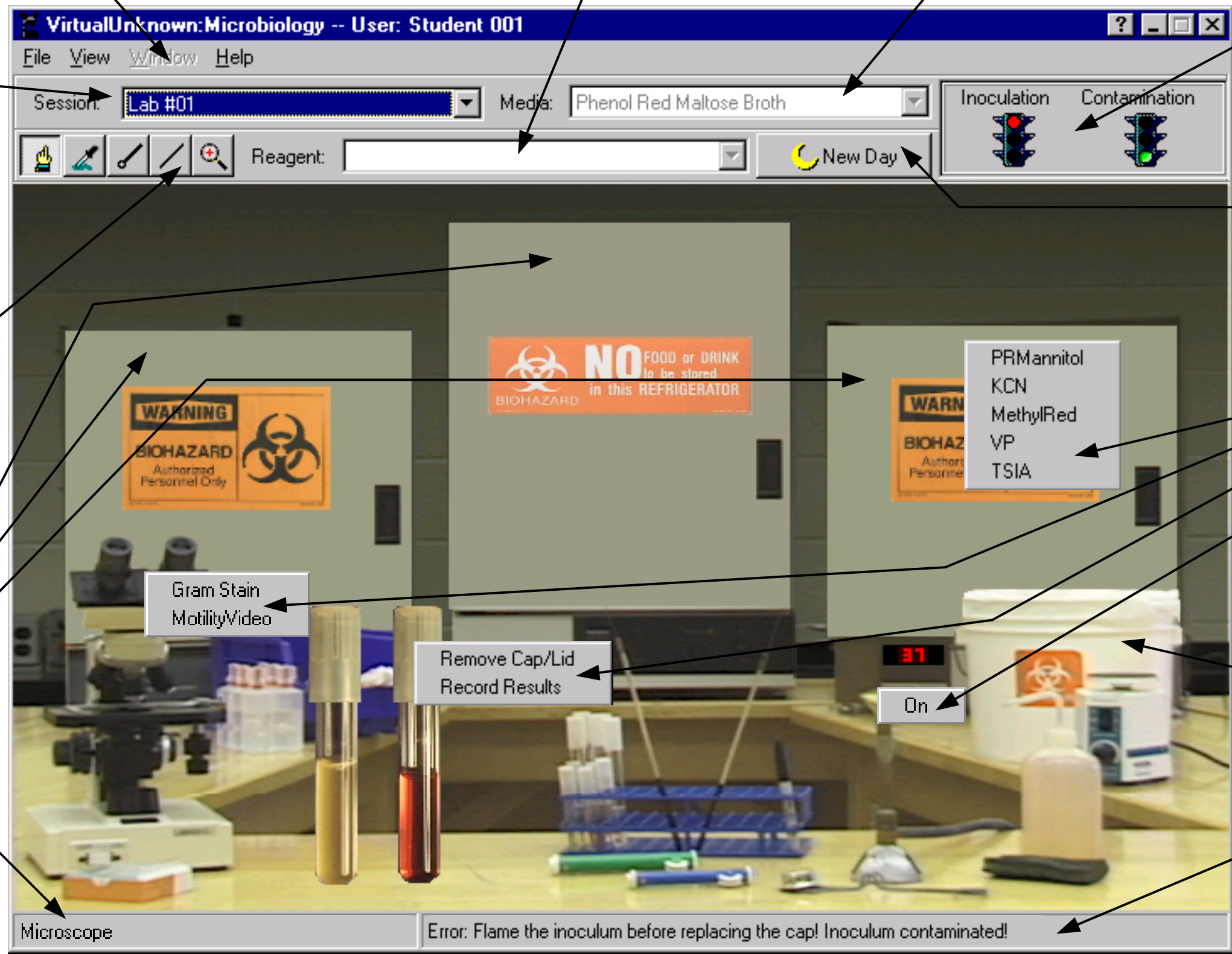
Context menus are used to remove tube caps & plate lids, record test results, view gram stains & motility videos, turn the burner on and off, and retrieve incubated cultures.

Cultures are "dragged and dropped" into the incubators or refrigerator.

Cultures are "dragged and dropped" in the biohazard bin for disposal.

Context area shows the name of the piece of lab equipment or culture under the cursor.

Status area displays timely status regarding the aseptic transfer process.



Gram Stain
MotilityVideo

Remove Cap/Lid
Record Results

On

Microscope

Error: Flame the inoculum before replacing the cap! Inoculum contaminated!